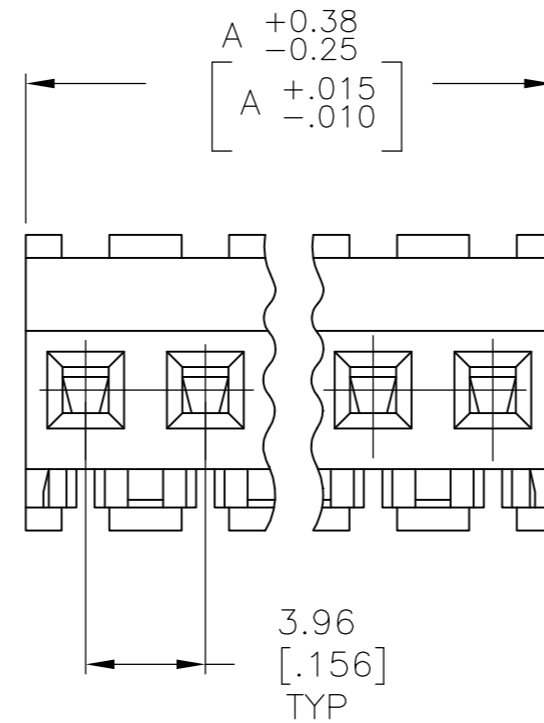
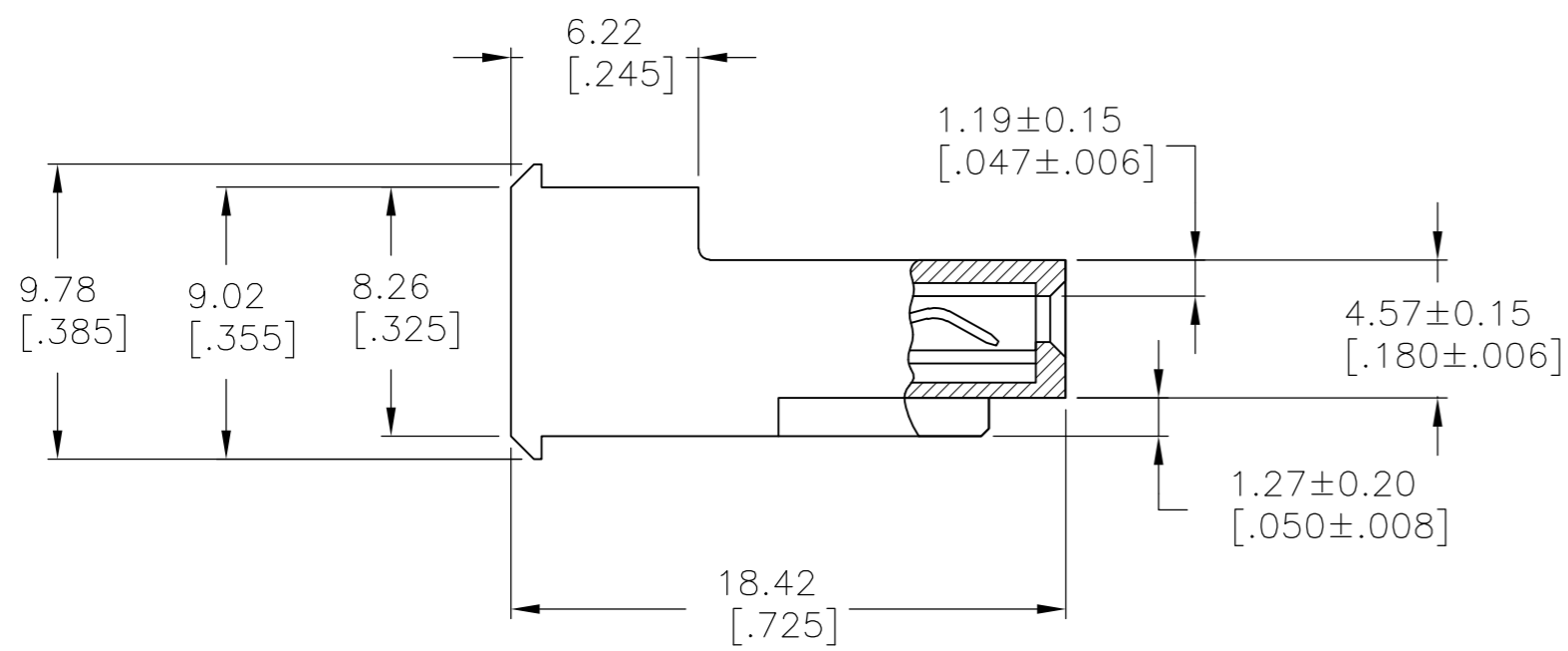
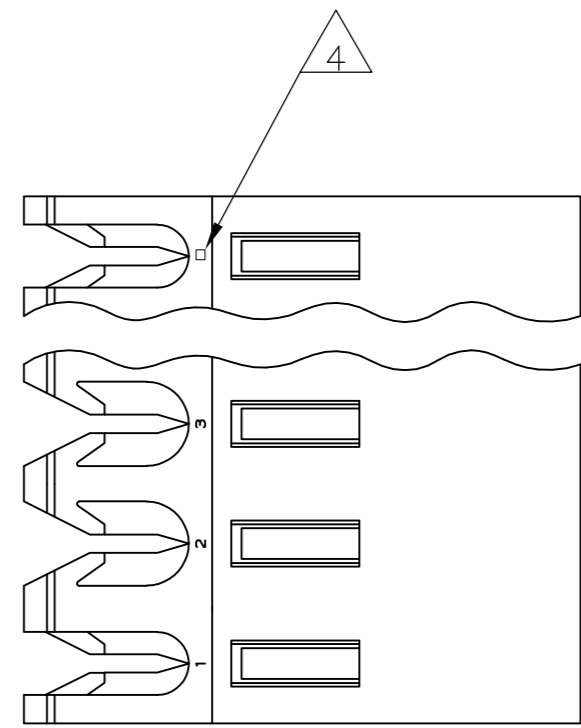


THIS DRAWING IS UNPUBLISHED. RELEASED FOR PUBLICATION
 © COPYRIGHT BY TYCO ELECTRONICS CORPORATION. ALL RIGHTS RESERVED.

LOC	DIST	REVISIONS			
P	LTR	DESCRIPTION	DATE	DWN	APVD
CM	54	B	ECO-07-012890	22JUN07	KW DB



47.55 [1.872]	12	4-644569-2
43.59 [1.716]	11	4-644569-1
39.62 [1.560]	10	4-644569-0
35.66 [1.404]	9	3-644569-9
31.70 [1.248]	8	3-644569-8
27.74 [1.092]	7	3-644569-7
23.77 [.936]	6	3-644569-6
19.81 [.780]	5	3-644569-5
15.85 [.624]	4	3-644569-4
11.89 [.468]	3	3-644569-3
7.92 [.312]	2	3-644569-2
47.55 [1.872]	12	1-644569-2
43.59 [1.716]	11	1-644569-1
39.62 [1.560]	10	1-644569-0
35.66 [1.404]	9	644569-9
31.70 [1.248]	8	644569-8
27.74 [1.092]	7	644569-7
23.77 [.936]	6	644569-6
19.81 [.780]	5	644569-5
15.85 [.624]	4	644569-4
11.89 [.468]	3	644569-3
7.92 [.312]	2	644569-2
DIM A	NO OF CIRCUITS	PART NO

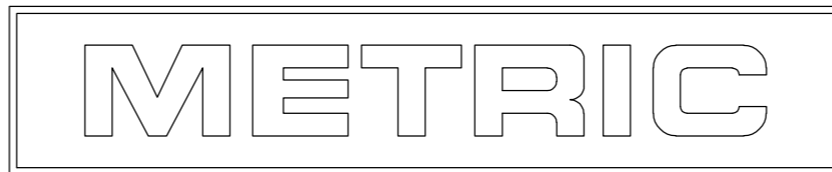
1 MATERIAL: CONNECTOR - NYLON UL94V-0 (BLACK).
 CONTACTS - 0.30[.012] THICK COPPER ALLOY
 BRIGHT TIN-LEAD 0.00203[.000080] MIN THICK
 FOR CONTACTS 644569-2 THRU 1-644569-2
 MATTE WHISKER MITIGATED TIN 0.00203[.000080]
 MIN THICKNESS OVER NICKEL UNDERPLATE FOR
 3-644569-2 THRU 4-644569-2

- 2. CONTACTS ACCEPT 22 AWG WIRE WITH 2.41[.095] MAX INSULATION DIAMETER.
- 3. CONTACTS MUST ACCEPT 1.14±0.03 [.045±.001] SQUARE POST AND REMAIN LOCKED IN POSITION.

4 IDENTIFICATION NUMBER FOR LAST CIRCUIT MAY NOT APPEAR ON ALL ASSEMBLIES.

5. DIMENSIONS IN BRACKETS ARE IN INCHES.

6. HOUSING FEATURES ARE: FEED-THRU WITHOUT LOCKING RAMP.



THIS DRAWING IS A CONTROLLED DOCUMENT.		DWN -	Tyco Electronics Corporation Harrisburg, Pa 17105-3608	
DIMENSIONS: mm [INCHES]		CHK R. SWING 27 JUN 91	NAME	
TOLERANCES UNLESS OTHERWISE SPECIFIED:		APVD G. MILLER 27 JUN 91	MTA 156 CONNECTOR ASSEMBLY, 22 AWG, UL94V-0, SPECIAL	
0 PLC ± -		PRODUCT SPEC	SIZE	CAGE CODE
1 PLC ± -		108-1051	A2	00779
2 PLC ± -		APPLICATION SPEC	DRAWING NO	RESTRICTED TO
3 PLC ± -		114-1020	C=644569	-
4 PLC ± -		WEIGHT -	SCALE	SHEET
ANGLES ± -		CUSTOMER DRAWING	4:1	1 OF 1
FINISH 1		REV B		